

## ATTACHMENT B

### FLUORIDE SUPPLEMENT PRESCRIBING TRENDS AMONG DENTISTS

# Economic Outlook and Emerging Issues in Dentistry

*Insights from Data from Q2 2025:  
Fluoride Supplement Prescriptions*

**HPI** Health Policy Institute

ADA American Dental Association\*

## Key Takeaways

**Nearly 2 in 3 dentists prescribe fluoride supplements to their patients.**

Among those who prescribe fluoride supplements to **child patients**:

- Those who see only child patients most often prescribe *high-concentration fluoride toothpaste* (71.1%) and almost two-thirds prescribe *fluoride tablets* (62.8%).
- Those who see both child and adult patients most often recommend *more frequent application of fluoride varnish* (72.8%). About half prescribe *high-concentration fluoride toothpaste* (52.3%) or *fluoride rinse* (51.9%).

Among those who prescribe fluoride supplements to **adult patients**:

- Those who see both child and adult patients more often recommend *more frequent application of fluoride varnish* (65.9%), *fluoride rinse* (53.8%), or *high-concentration fluoride gel* (51.9%) compared to those who see only adult patients (39.7%, 44.8%, and 36.2%, respectively).
- Among all dentists who see adult patients, the most common type of fluoride supplement prescribed is *high-concentration fluoride toothpaste* (84.1% and 89.7%).

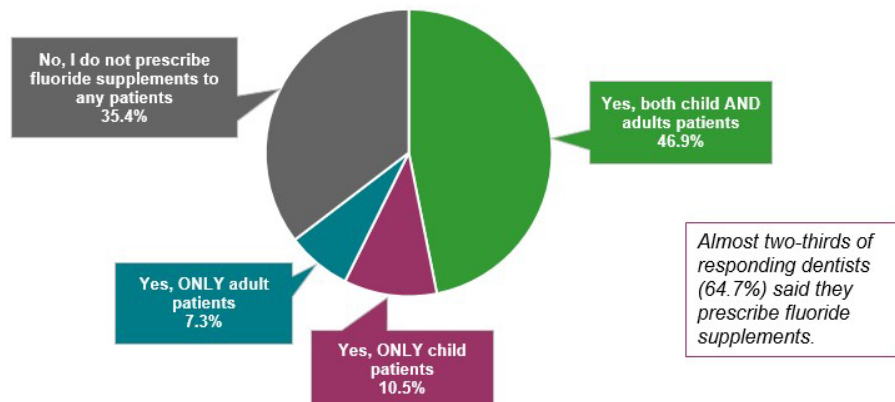
**HPI** Health Policy Institute  
ADA American Dental Association\*

© 2024 American Dental Association. All Rights Reserved.

2

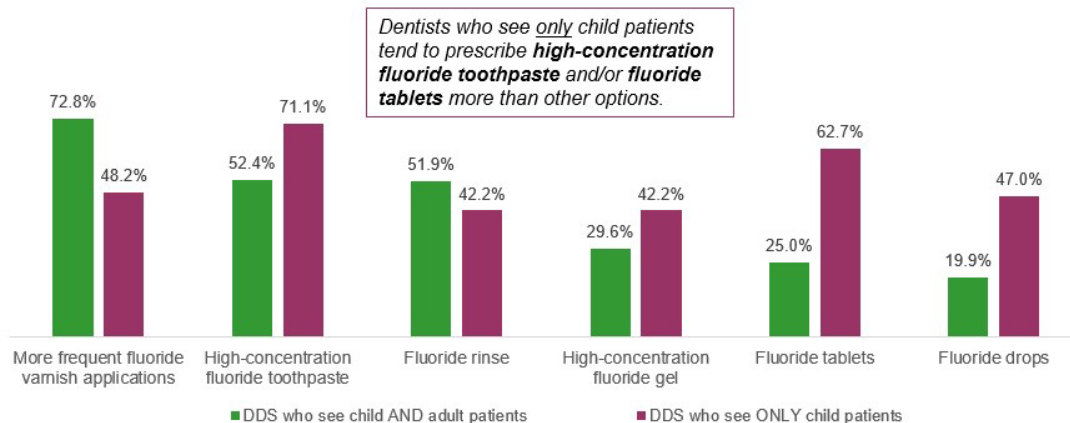
## Most Dentists Prescribe Fluoride Supplements

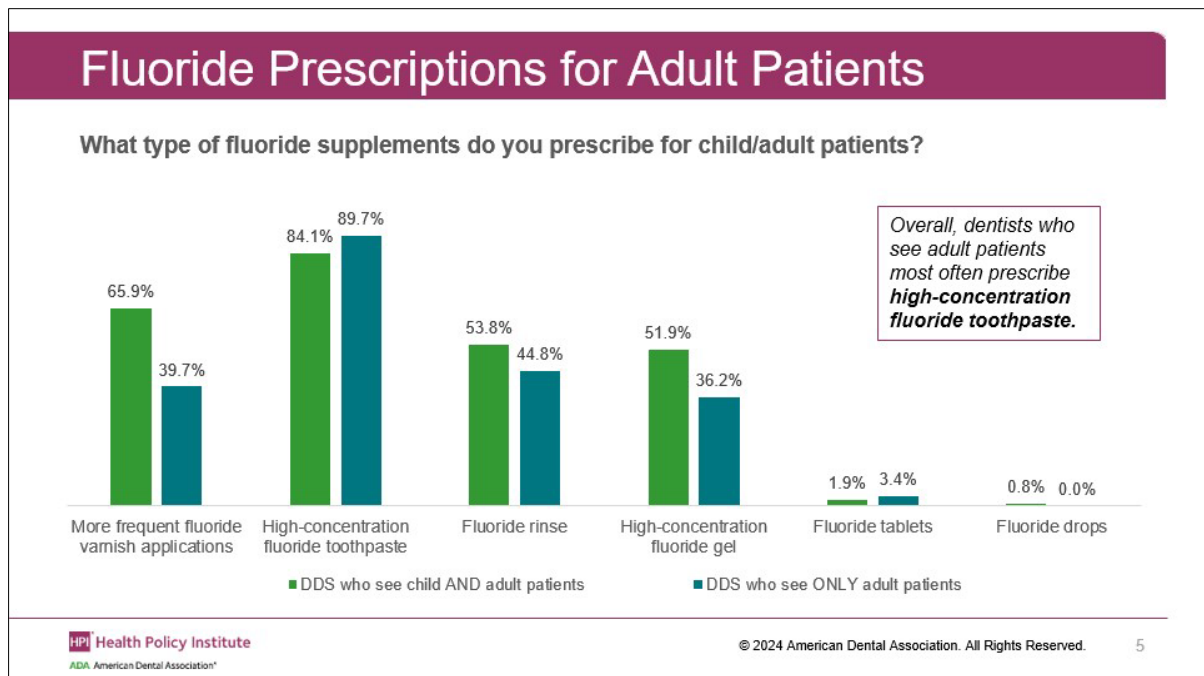
Do you prescribe fluoride supplements for any of your patients?



## Fluoride Prescriptions for Child Patients

What type of fluoride supplements do you prescribe for child/adult patients?



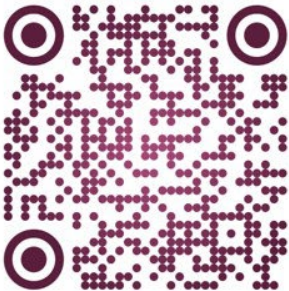



## Methods


- These data were collected as part of a larger, quarterly, online poll originally launched in January 2022 with the goal to better understand the economic and operational conditions in dental practices and public health clinics over time and to measure the impact of emerging issues in dentistry.
- This quarter's poll was distributed to nearly 2,500 panel members; 799 dentists participated in Q2 2025.
- Data was collected June 16 - 22, 2025.
- Core measures: Economic confidence, patient wait times, busyness levels, recruitment needs and challenges, recent practice decisions.
- New in Q2 2025: **Dentists' prescription of fluoride supplements and types of fluoride supplements prescribed**, and actual and expected increases in practice expenses.
- Complete reports available at [ADA.org/HPI](https://ada.org/HPI).

HPI Health Policy Institute  
ADA American Dental Association®


© 2024 American Dental Association. All Rights Reserved. 6



ADA.org/HPI  
hpi@ada.org  
 marko-vujicic  
 @adahpi

 **Health  
Policy  
Institute**  
 American Dental Association®

---

 Health Policy Institute  
 American Dental Association®

© 2024 American Dental Association. All Rights Reserved. 7